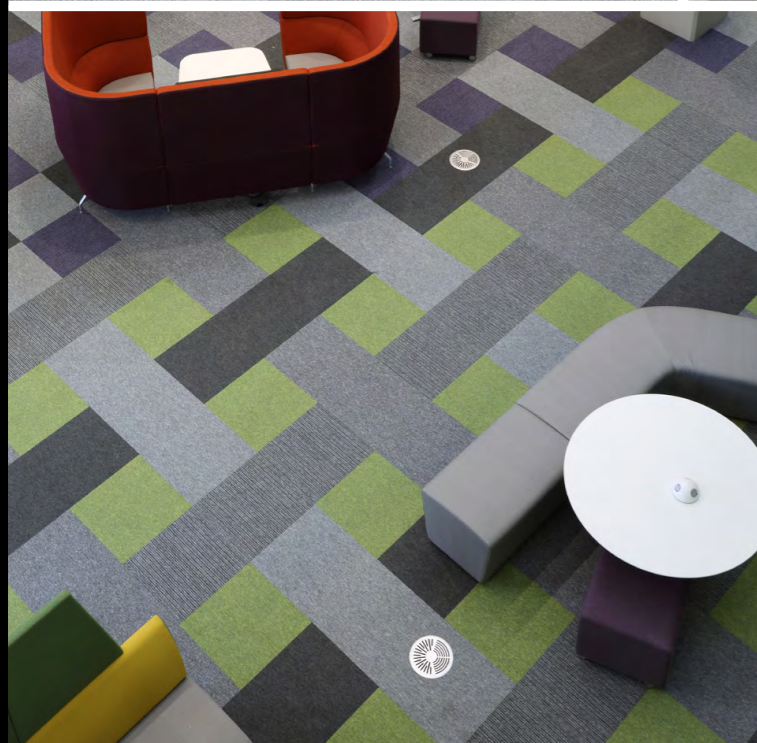


Product catalogue  
**burmatex**<sup>®</sup>





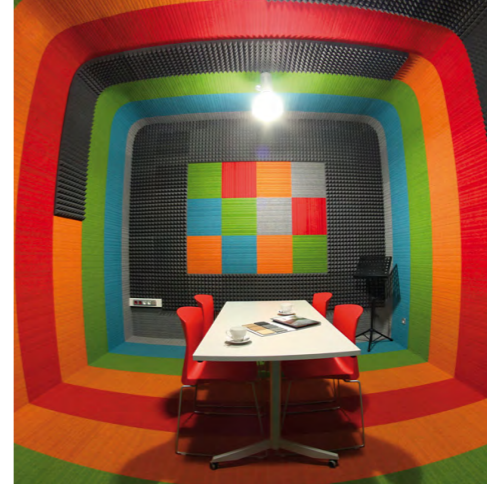
We are passionate about making our flooring products and aim to create truly inspirational environments for people to enjoy



**burmatex**® offers an expansive product range; our traditional fibre bonded sheet and tile ranges include entrance bonded products and ground-breaking structure bonded ranges, which present an expansive colour palette. Our multilevel loop, low level loop, textured loop and cut pile tufted carpet tile ranges, including a specialist entrance barrier product, are inspired by the latest and predicted future design and colour trends.



**burmatex**® is committed to best environmental practice in our manufacturing, from the sourcing of raw materials - including recycled content - minimising and reprocessing waste, use of green electricity and recycled packaging. Because of this, the Building Research Establishment (BRE) has awarded our products the highest BREEAM ratings; mostly A+.



We hope that by reading our catalogue and visiting our website at **[www.burmatex.co.uk](http://www.burmatex.co.uk)**, we will inspire you to work with us to create really unique, captivating floor designs.

**burmatex**® is a leading UK manufacturer of contract carpets and carpet tiles. We are passionate about creating truly inspirational environments, reflected in our products unique nature across both design and manufacture.

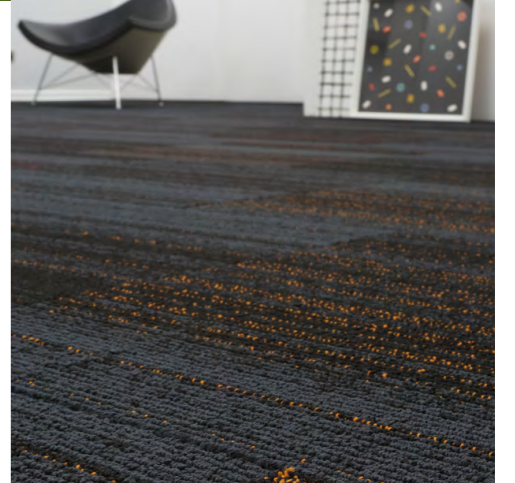
Our products are suitable for use in heavy contract markets and used in a wide variety of private and public sector buildings, including schools, offices, universities and leisure centres.

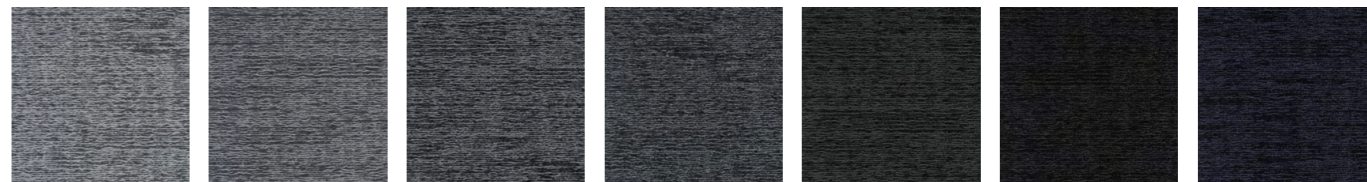


The **burmatex**® design team are a driving force in developing product ranges which reflect colour and design trends as well as creating exclusive, bespoke carpet tiles to meet customers' needs and providing our free planned flooring layout design service.

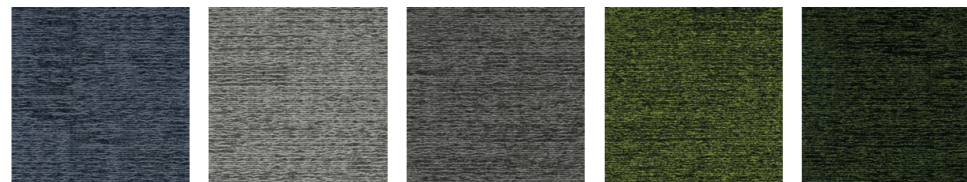


**burmatex**® is a BS EN ISO 9001:2000 registered company (Cert No.FM1440). All products are tested to BSI/CEN standards in relation to durability, wear, flame retardancy, antistatic properties and colour fastness.





22201 ice    22202 ridge    22203 point    22204 north    22205 moose    22206 anchor    22207 creek



22208 lake    22209 husky    22210 wolf    22211 spruce    22212 valley

**Specification**

- Product Description:** Multilevel Loop
- Pile Yarn Description:** 100% Solution Dyed Aquafil Econyl Nylon (Polyamide-PA)
- Tile Dimensions:** 50 cm x 50 cm
- Pile Height:** 5 mm +/-10%
- Total Thickness:** 7.5 mm +/-10%
- Pile Weight:** 800 g/m<sup>2</sup>
- Tufts per m<sup>2</sup>:** 226,771 g/m<sup>2</sup>
- Castor Chair Rating:** BS EN 985 Pass
- Body Voltage Test:** BS ISO 6356:2000 <2kV
- Colour Fastness To Light:** Minimum grade 6
- Flammability:** Euroclass Bfl-s1



# alaska

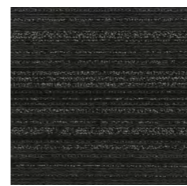
**alaska** is our first multilevel loop product and its name was also our inspiration.

A concise palette of twelve colours in this 800g product, combined with the tactile and textural finish, all relate to the invigorating outdoors of this beautiful state. This enables the creation of nature-inspired flooring schemes, while not excluding the possibility of a more classic effect.

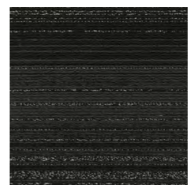
Used alone, or in combination with other burmatex ranges such as **grade**, **axis** and **hadron**, **alaska** brings an additional layer of flexibility and creativity to our constantly evolving product portfolio.



21601 titanium



21615 ash



21603 sparkler



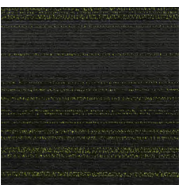
21616 arctic



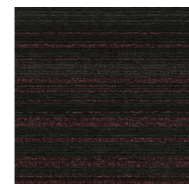
21610 clay



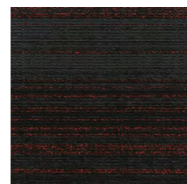
21604 firefly



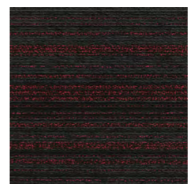
21608 moss



21607 flamingo



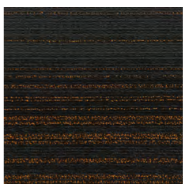
21605 crimson



21612 raspberry



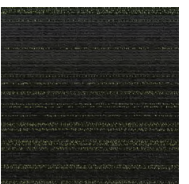
21613 rust



21606 papaya



21611 starling



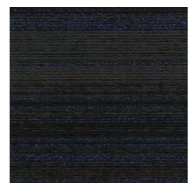
21609 mint



21614 violet



21602 cerulean



21617 electric

#### Specification

**Product Description:** Textured Loop Pile

**Pile Yarn Description:** 100% Solution Dyed Nylon 6.6 (Polyamide-PA)

**Tile Dimensions:** 50 cm x 50 cm

**Pile Height:** 3.5 mm +/-10%

**Total Thickness:** 6.5 mm +/-10%

**Pile Weight:** 800 g/m<sup>2</sup>

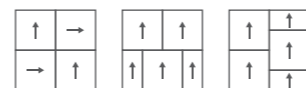
**Tufts per m<sup>2</sup>:** 177,165 g/m<sup>2</sup>

**Castor Chair Rating:** BS EN 985 Pass

**Body Voltage Test:** BS ISO 6356:2000 <2kV

**Colour Fastness To Light:** Minimum grade 6

**Flammability:** Euroclass Bfl-s1



# hadron

**hadron** is highly inspired by striking imagery of the hadron collider. Hyper-real bright bursts of colour, surround by dark space. Each colour-way from the collection has the same neutral, dark grey base, making it easy to delineate areas without harsh lines and creating seamless transitions across a floor. A variety of highlight colours are used, from intense pops of colour to mid tones, neutrals and semi-darks.

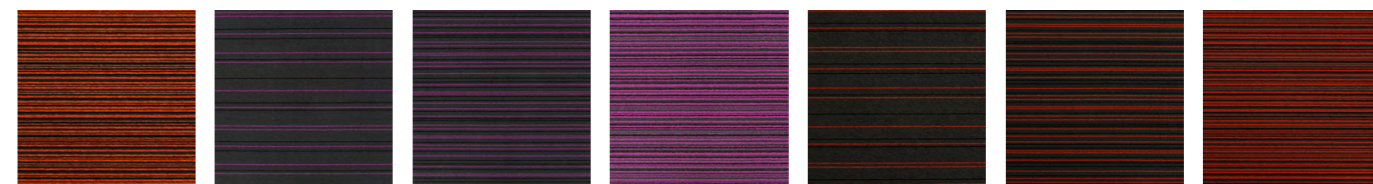
The inclusion of texture on this carpet tile, in a subtle weft style pattern, enhances the dispersed nature of the colours.



17415 cyan 5    17315 cyan 10    17215 cyan 60    17416 marina 5    17316 marina 10    17216 marina 60    17405 lime 5



17305 lime 10    17205 lime 60    17408 night 5    17308 night 10    17208 night 60    17403 orange 5    17303 orange 10



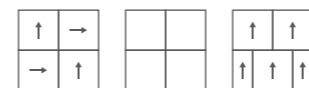
17203 orange 60    17413 magenta 5    17313 magenta 10    17213 magenta 60    17402 scarlet 5    17302 scarlet 10    17202 scarlet 60



17414 canary 5    17314 canary 10    17214 canary 60

**Specification**

- Product Description:** Textured Loop Pile
- Pile Yarn Description:** 100% Solution Dyed Nylon
- Tile Dimensions:** 50 cm x 50 cm
- Pile Height:** 4.5 mm +/-10%
- Total Thickness:** 7.0 mm +/-10%
- Pile Weight:** 680 g/m<sup>2</sup>
- Tufts per m<sup>2</sup>:** 180.976 g/m<sup>2</sup>
- Castor Chair Rating:** BS EN 985 Pass
- Body Voltage Test:** BS ISO 6356:2000 <2kV
- Colour Fastness To Light:** Minimum grade 6
- Flammability:** Euroclass Bfl-s1

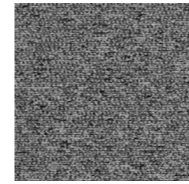


# strands

**strands** is a vibrant and exciting 100% Nylon textured loop carpet tile range offering almost limitless opportunities for floor design.

Each tile starts with a background colour of mid grey with a black pinstripe and is then accented by one of eight striking key note colour stripes in three versions: - Strands 5; Strands 10 and Strands 60; so named because the key note colour stripe takes up 5%, 10% and 60% of the carpet tile respectively.

Strands offers the designer combinations of pattern and colour to create and develop unique floor designs starting from tessellated or brick in 5, 10 or 60 up to amazing effects such as random monolithic, brick repeat, chequerboard using combinations of 5, 10 and 60. Schemes can be further enhanced using combinations of other burmatex ranges.



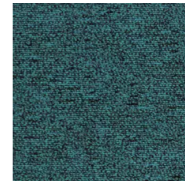
22101 frost



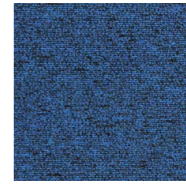
22103 wren



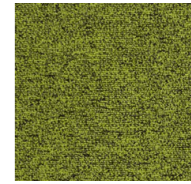
22104 mist



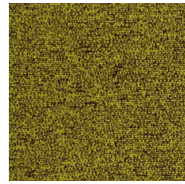
22102 sky



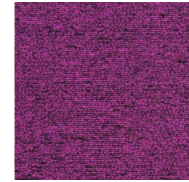
22105 blueprint



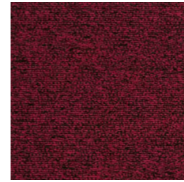
22106 fern



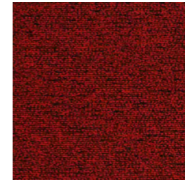
22109 orb



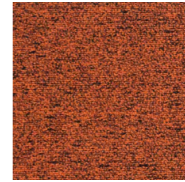
22108 jelly



22107 fuschia



22111 robin



22110 amber

#### Specification

**Product Description:** Textured Loop Pile

**Pile Yarn Description:** 100% Solution Dyed Aquafil Econyl Nylon (Polyamide-PA)

**Tile Dimensions:** 50 cm x 50 cm

**Pile Height:** 3.5 mm +/-10%

**Total Thickness:** 6.0 mm +/-10%

**Pile Weight:** 550 g/m<sup>2</sup>

**Tufts per m<sup>2</sup>:** 177,165 g/m<sup>2</sup>

**Castor Chair Rating:** BS EN 985 Pass

**Body Voltage Test:** BS ISO 6356:2000 <2kV

**Colour Fastness To Light:** Minimum grade 6

**Flammability:** Euroclass Bfl-s1



## axis

**axis** is inspired by our surroundings; nature, art, food, and culture. Strong and bold, or rich and calm, the palette of eleven colours provides the axis for many different flooring schemes. Create a vibrant punch of colour, a calm oasis, or use in combination with other burmatex ranges such as **hadron**, **grade** or **strands**.

The relationship with **strands** is unique, in that all the colours in the strands palette now have a corresponding axis colour.

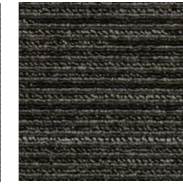
Each of the colours has been designed to be installed single direction – no need to quarter turn – with an inherent dark fleck to provide extra appearance retention without compromising the impact of the product.



15606 tangle cube



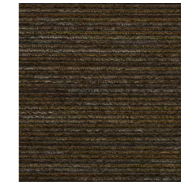
15607 square prism



15612 silver vector



15604 bohemian dome



15605 banded torus



15608 polar curve



15603 twisted sphere

#### Specification

**Product Description:** Textured Loop Pile  
**Pile Yarn Description:** 100% Solution Dyed & Spaced Dyed Nylon (Polyamide-PA)  
**Tile Dimensions:** 50 cm x 50 cm  
**Pile Height:** 3.5 mm +/-10%  
**Total Thickness:** 6.0 mm +/-10%  
**Pile Weight:** 550 g/m<sup>2</sup>  
**Tufts per m<sup>2</sup>:** 188,976 g/m<sup>2</sup>  
**Castor Chair Rating:** BS EN 985 Pass  
**Body Voltage Test:** BS ISO 6356:2000 <2kV  
**Colour Fastness To Light:** Minimum grade 6  
**Flammability:** Euroclass Bfl-s1



## surface

**surface** is a 100% nylon textured loop pile carpet tile created to coordinate beautifully with any commercial interior scheme. Combinations of solution and space dyed nylon create eight versatile colourways, from earthy tones through to cool neutrals. Architectural exteriors, facades and mathematical and manufactured surfaces inspire the visually textured appearance, creating a feeling of dimension and depth in a practical textured loop construction. This hard wearing, versatile and great value product is suitable for use in any commercial interior project.

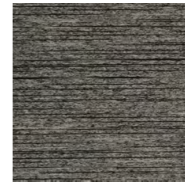




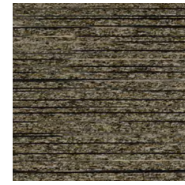
19802 blue tin



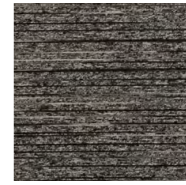
19805 burnished copper



19801 galvanised steel



19806 green nickel



19804 permanganate



19803 warmed lead

#### Specification

**Product Description:** Textured Loop Pile

**Pile Yarn Description:** 100% Solution Dyed & Space Dyed Nylon (Polyamide-PA)

**Tile Dimensions:** 50 cm x 50 cm

**Total Thickness:** 5 mm +/-10%

**Pile Weight:** 620 g/m<sup>2</sup>

**Tufts per m<sup>2</sup>:** 235.800 g/m<sup>2</sup>

**Castor Chair Rating:** BS EN 985 Pass

**Body Voltage Test:** BS ISO 6356:2000 <2kV

**Colour Fastness To Light:** Minimum grade 6

**Flammability:** Euroclass Bfl-s1



## tandem

**m** is a high performance tile class 33, central to the design collection; this simply styled tile presents six colours from a natural palette which can be laid both monolithically and quarter turn suiting small and large spaces.

**tandem** works individually and alongside other ranges to complement and enhance a design colour; with a textured effect and enduring finish this gentle design effortlessly complements various finishes and furnishings.



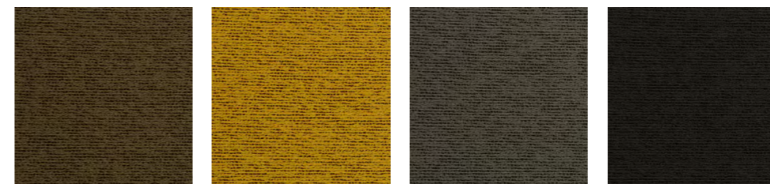
10901 down pink    10902 down red    10904 down tomato    10908 down purple    10906 down turquoise    10907 down blue    19912 down olive



10905 down mocha    19910 down light grey    10903 down dark grey



19501 up pink    19502 up red    19504 up tomato    19508 up purple    19506 up turquoise    19507 up blue    19509 up emerald



19512 up olive    19511 up yellow    19510 up light grey    19503 up dark grey

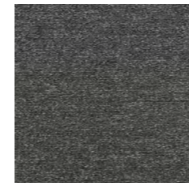
#### Specification

**Product Description:** Textured Loop Pile  
**Pile Yarn Description:** 100% Solution Dyed Nylon (Polyamide-PA)  
**Tile Dimensions:** 50 cm x 50 cm  
**Pile Height:** 4 mm +/-10%  
**Total Thickness:** 6.5 mm +/-10%  
**Pile Weight:** 580 g/m<sup>2</sup>  
**Tufts per m<sup>2</sup>:** 176850g/m<sup>2</sup>  
**Castor Chair Rating:** BS EN 985 Pass  
**Body Voltage Test:** BS ISO 6356:2000 <2kV  
**Colour Fastness To Light:** Minimum grade 6  
**Flammability:** Euroclass Bfl-s1

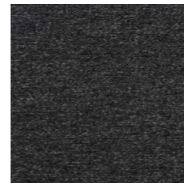


## up/down

**up/down** is a high performance loop pile tile class 33, ideally suited for use in any commercial space as the flexible designs' contemporary touches enhance a classic solid colour, maintaining fundamental appearance and quality. The coordinated, modern designs of the reversed pairs of vibrant up and cooler down flooring tiles enrich a space flexibly, with 24 colours making 12 reversed pairs across a balanced palette.



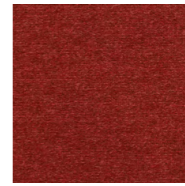
21803 medium grey



21802 coal grey



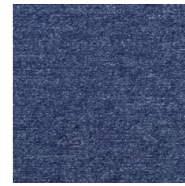
21804 beige



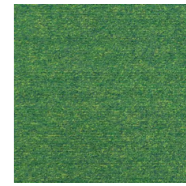
21808 berry red



21806 sea blue



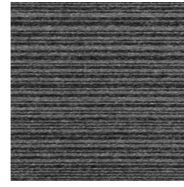
21807 denim blue



21805 apple green



21903 medium grey stripe



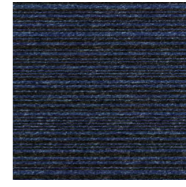
21902 coal grey stripe



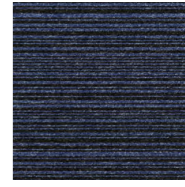
1904 beige stripe



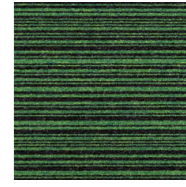
21908 berry red stripe



21906 sea blue stripe



21907 denim blue stripe



21905 apple green stripe



21801 jet black

#### Specification

**Product Description:** Low Level Loop

**Pile Yarn Description:** 100% Solution Dyed Nylon (Polyamide-PA)

**Tile Dimensions:** 50 cm x 50 cm

**Pile Height:** 3.0 mm +/-10%

**Total Thickness:** 5.5 mm +/-10%

**Pile Weight:** 470 g/m<sup>2</sup> +/-10%

**Tufts per m<sup>2</sup>:** 196,850 g/m<sup>2</sup> +/-10%

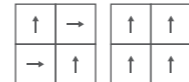
**Castor Chair Rating:** BS EN 985 Pass

**Body Voltage Test:** BS ISO 63562:2000 <2kV

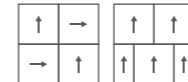
**Colour Fastness To Light:** Minimum grade 6

**Flammability:** Euroclass Bfl-s1

go to



go to stripe



## go to

**go to** offers two designs – plain and stripe in a popular colour palette of fifteen. Brighter and darker greys and blues are supported with red and green brights within the collection. Each colour except jet black has its own counterpart in the stripe design. You can mix and match the plain and stripe options to create more interesting floor layouts or define zones.

The range maintains the level of high performance and resilience that **burmatex**® carpet tiles are known for. **go to** is the perfect choice for users that are looking for a quick and easy carpet installation option.



20201 guyana moss    20202 bermuda lime    20206 green turtle    20225 saona sage    20209 trinidad sea    20211 barthelemy green    20213 serranilla stone



20203 caicos azure    20220 barbados blue    20223 nevis blue    20253 key west blue    20252 nassau skies    20254 puerto rico purple    20212 marie galante purple



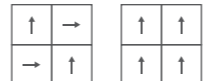
20249 martinique maroon    20210 bellamy red    20205 bahamas orange    20204 tortola gold    20246 tobago sands    20258 panama brown    20208 belize greige



20214 st martin sands    20245 dominica dawn    20242 antigua steel    20230 grenada grey    20207 st lucia night    20260 st kitts basalt    20259 montserrat black

**Specification**

- Product Description: Low Level Loop
- Pile Yarn Description: 100% Solution Dyed Nylon (Polyamide-PA)
- Tile Dimensions: 50 cm x 50 cm, 25 cm x 100 cm
- Pile Height: 4 mm +/-10%
- Total Thickness: 6.5 mm +/-10%
- Pile Weight: 600 g/m<sup>2</sup>
- Tufts per m<sup>2</sup>: 196,500 g/m<sup>2</sup>
- Castor Chair Rating: BS EN 985 Pass
- Body Voltage Test: BS ISO 6356:2000 <2kV
- Colour Fastness To Light: Minimum grade 6
- Flammability: Euroclass Bfl-s1

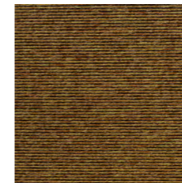


# tivoli tile

tivoli presents a high performance loop pile (class 33) product offering, made with 100% solution dyed nylon and including **tivoli**, **tivoli online** and **tivoli multiline**.



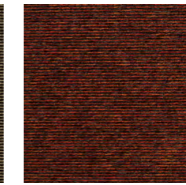
online  
20605 pamanzi earth



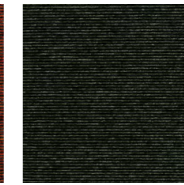
online  
20606 baltic amber



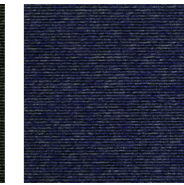
online  
20603 tahitian pearl



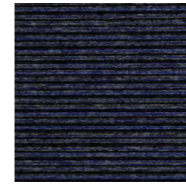
online  
20604 sardinian coral



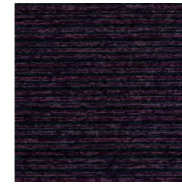
online  
20602 cyclades jade



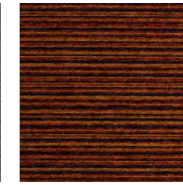
online  
20601 atlantic cobalt



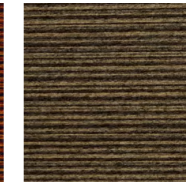
multiline  
20701 ibiza blue



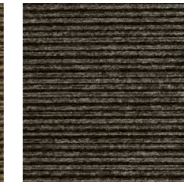
multiline  
20705 mauritius mauve



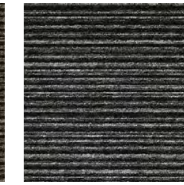
multiline  
20706 reunion terracotta



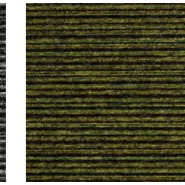
multiline  
20704 polynesia beige



multiline  
20703 melanesia grey



multiline  
20707 tenerife black



multiline  
20702 pacific green

#### Specification

**Product Description:** Low Level Loop

**Pile Yarn Description:** 100% Solution Dyed Nylon (Polyamide-PA)

**Tile Dimensions:** 50 cm x 50 cm, 25 cm x 100 cm

**Pile Height:** 4 mm +/-10%

**Total Thickness:** 6.5 mm +/-10%

**Pile Weight:** 600 g/m<sup>2</sup>

**Tufts per m<sup>2</sup>:** 196.500 g/m<sup>2</sup>

**Castor Chair Rating:** BS EN 985 Pass

**Body Voltage Test:** BS ISO 6356:2000 <2kV

**Colour Fastness To Light:** Minimum grade 6

**Flammability:** Euroclass Bfl-s1

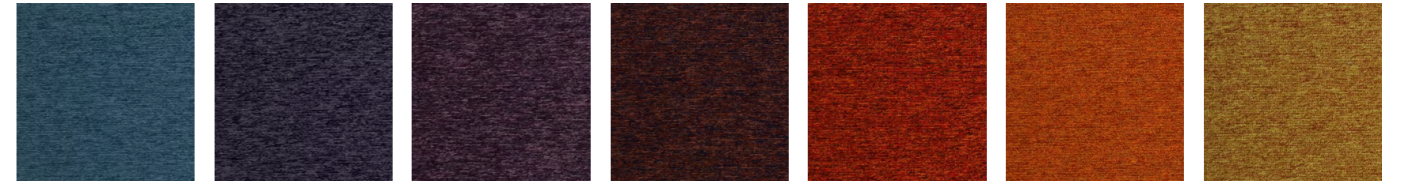


## tivoli tile (cont.)

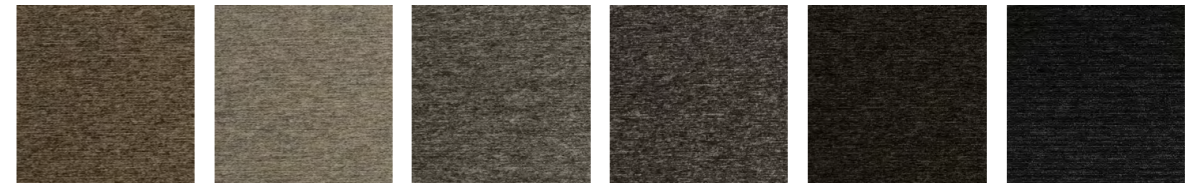
Varied plain, **tivoli**, classic pinstripe, **tivoli online** and contemporary striped, **tivoli multiline**, designs can be used individually or in a bespoke arrangement, with the expansive, modern colour palette enabling classic, neutral schemes or innovative, creative layouts.



20202 bermuda lime    20206 green turtle    20211 barthelemy green    20213 serranilla stone    20203 caicos azure    20220 barbados blue    20253 key west blue



20252 nassau skies    20254 puerto rico purple    20212 marie galante purple    20249 martinique maroon    20210 bellamy red    20205 bahamas orange    20204 tortola gold



20208 belize greige    20214 st martin sands    20245 dominica dawn    20242 antigua steel    20207 st lucia night    20259 montserrat black



multiline 20701 ibiza blue    multiline 20705 mauritius mauve    multiline 20706 reunion terracotta    multiline 20704 polynesia beige    multiline 20703 melanesia grey    multiline 20707 tenerife black    multiline 20702 pacific green

**Specification**

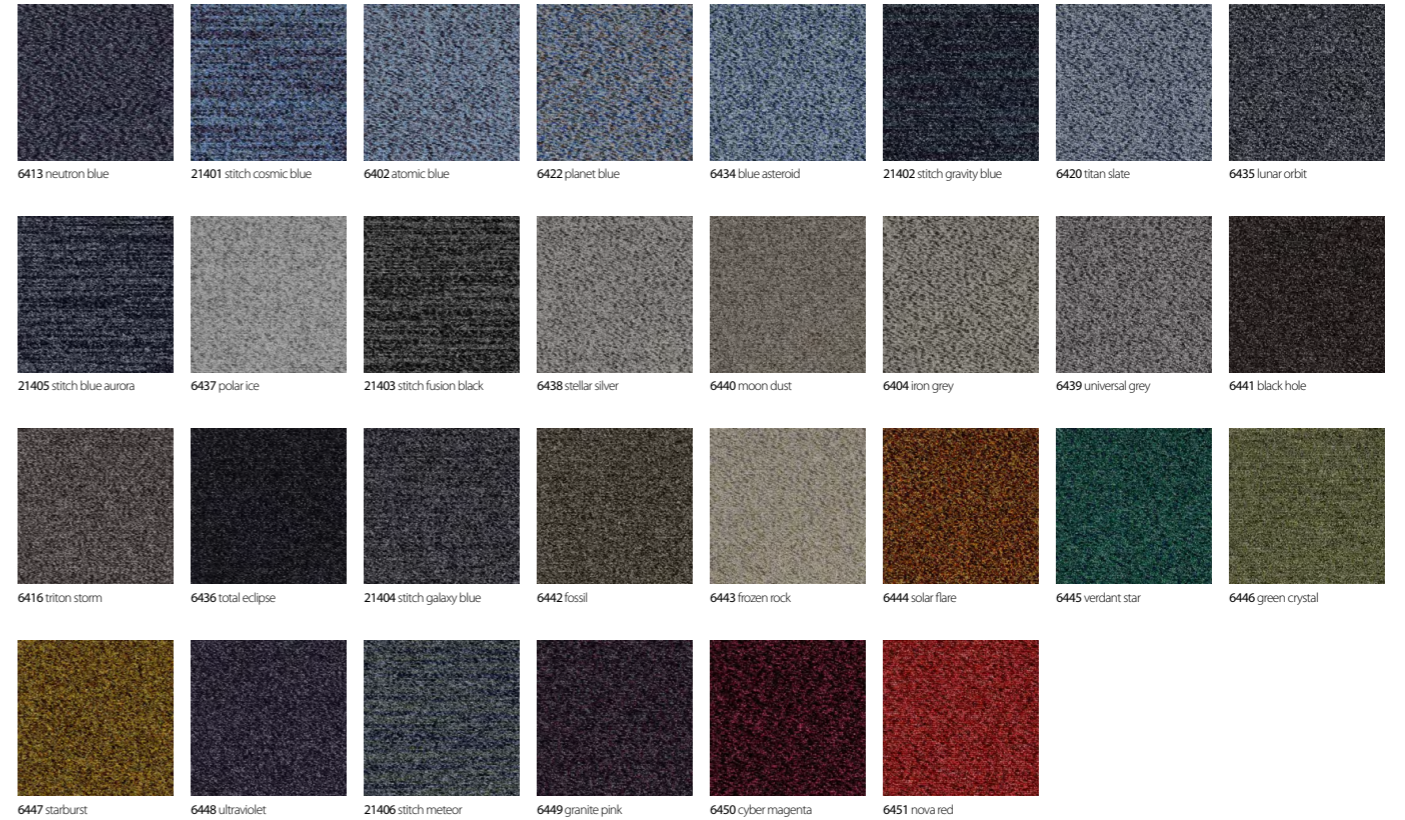
- Product Description:** Low Level Loop
- Pile Yarn Description:** 100% Solution Dyed Nylon (Polyamide-PA)
- Tile Dimensions:** 25 cm x 100 cm
- Pile Height:** 4 mm +/-10%
- Total Thickness:** 6.5 mm +/-10%
- Pile Weight:** 600 g/m<sup>2</sup>
- Tufts per m<sup>2</sup>:** 196,500 g/m<sup>2</sup>
- Castor Chair Rating:** BS EN 985 Pass
- Body Voltage Test:** BS ISO 6356:2000 <2kV
- Colour Fastness To Light:** Minimum grade 6
- Flammability:** Euroclass Bfl-s1



# tivoli plank

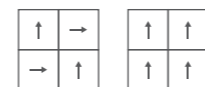
**tivoli** carpet planks offer two loop pile designs – a solid colour **tivoli** and a stripe **tivoli multiline**. The colour selection creates a broad palette with complementary colours across the two designs developing creative installation options.

**tivoli** carpet planks are made with 100% solution dyed nylon and are suitable for heavy commercial use (class 33).



**Specification**

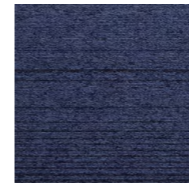
- Product Description:** Low Level Loop
- Pile Yarn Description:** 100% Nylon (Polyamide PA) Space Dyed & Recycled Solution Dyed
- Tile Dimensions:** 50 cm x 50 cm
- Pile Height:** 4.8 mm +/-10%
- Total Thickness:** 7.3 mm +/-10%
- Pile Weight:** 550 g/m<sup>2</sup>
- Tufts per m<sup>2</sup>:** 196,500 g/m<sup>2</sup>
- Castor Chair Rating:** BS EN 985 Pass
- Body Voltage Test:** BS ISO 6356:2000 <2kV
- Colour Fastness To Light:** Minimum grade 6
- Flammability:** Euroclass Bfl-s1



# infinity

infinity offers 2 designs – **infinity** and **infinity stitch** in a large well balanced palette of 30 colours.

Both the classic flecked design of **infinity** and the unique directional organic pattern of **infinity stitch** are ideal for various type of interiors like large open-plan office spaces, smaller individual offices, corridors, reception areas or public buildings.



denim  
■ 21502 ■ 22502



indigo  
■ 21503 ■ 22503



purple  
■ 21506 ■ 22506



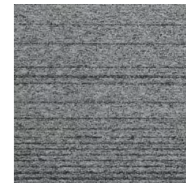
ruby  
■ 21504 ■ 22504



silver  
■ 21501 ■ 22501



zinc  
■ 21508 ■ 22508



smoke  
■ 21509 ■ 22509



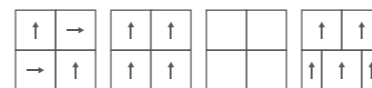
crater  
■ 21505 ■ 22505



abyss  
■ 21507 ■ 22507

#### Specification

- Product Description:** Low Level Loop
- Pile Yarn Description:** 100% Solution Dyed Nylon (Polyamide-PA)
- Tile Dimensions:** 50 cm x 50 cm, 25 cm x 100 cm
- Pile Height:** 3.5 mm +/-10%
- Total Thickness:** 6.0 mm +/-10%
- Pile Weight:** 620 g/m<sup>2</sup> +/-10%
- Tufts per m<sup>2</sup>:** 235,800 g/m<sup>2</sup> +/-10%
- Castor Chair Rating:** BS EN 985 Pass
- Body Voltage Test:** BS ISO 63562:2000 <2kV
- Colour Fastness To Light:** Minimum grade 6
- Flammability:** Euroclass Bfl-s1



## grade tile & plank

The name **grade** links to the graduation between lighter tones and darker ones within each colour option. A researched and considered palette of nine colours gives great flexibility and longevity, whether using a single selection or creating your own combinations. Colours can subtly diffuse from one to another, or create drama by using blocks of contrasted areas

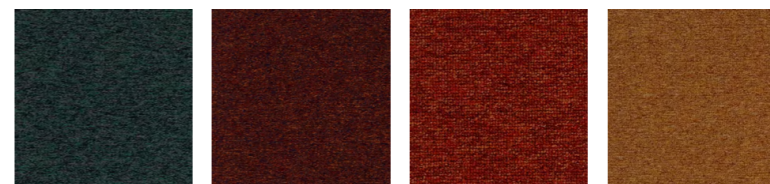




51435 fudge    51436 timber    51405 honey    51410 charcoal    51401 slate    51402 flint    51433 moonlight



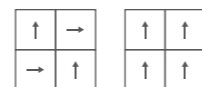
51412 deep sea    51434 dumulus    51403 midnight    51432 atmosphere    51413 crystal    51418 delft    51411 ocean



51407 everglade    51406 spice    51437 poppy    51438 sandstone

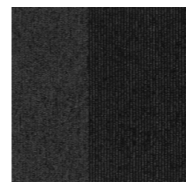
#### Specification

**Product Description:** Low Level Loop  
**Pile Yarn Description:** 100% Solution Dyed Nylon  
**Tile Dimensions:** 50 cm x 50 cm  
**Pile Height:** 4.5 mm +/-10%  
**Total Thickness:** 7.0 mm +/-10%  
**Pile Weight:** 550 g/m<sup>2</sup>  
**Tufts per m<sup>2</sup>:** 176,850 g/m<sup>2</sup>  
**Castor Chair Rating:** BS EN 985 Pass  
**Body Voltage Test:** BS ISO 6356:2000 <2kV  
**Colour Fastness To Light:** Minimum grade 6  
**Flammability:** Euroclass Bfl-s1



## balance

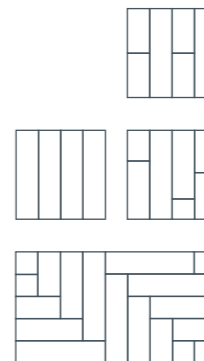
**balance** is a 100% solution dyed nylon level loop pile carpet tile, ideal for commercial, education and public sector projects. **balance's** 18 colourways have been inspired by an eclectic global palette which work equally well when used subtly or boldly over large areas or as accents to define smaller floor spaces.



black  
■21001 ■22001

#### Specification

**Product Description:** Low Level Loop  
**Pile Yarn Description:** 100% Solution Dyed Nylon (Polyamide-PA)  
**Tile Dimensions:** 50 cm x 50 cm, 25 cm x 100 cm  
**Pile Height:** 4.5 mm +/-10%  
**Total Thickness:** 7.0 mm +/-10%  
**Pile Weight:** 550 g/m<sup>2</sup>  
**Tufts per m<sup>2</sup>:** 176,850 g/m<sup>2</sup>  
**Castor Chair Rating:** BS EN 985 Pass  
**Body Voltage Test:** BS ISO 63562:2000 <2kV  
**Colour Fastness To Light:** Minimum grade 6  
**Flammability:** Euroclass Bfl-s1

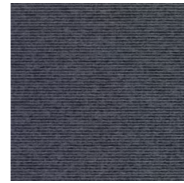


## balance echo tile & plank

**balance echo** black is a dark, low level loop, carpet tile and plank design in 100% solution dyed nylon. With a combination of stripes and blocks this heavy contract (class 33), flexible design works in a mixture of installation styles. Able to be combined with both bright and neutral inserts, this multi-tile/multi-plank design enables the simple creation of an impressive installation.



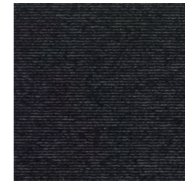
19701 dark sepiá



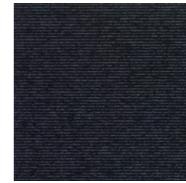
19702 space dust



19703 pencil lead



19704 classic grey



19705 grey slate



19706 blackboard

#### Specification

**Product Description:** Low Level Loop

**Pile Yarn Description:** 100% Solution Dyed Nylon (Polyamide-PA)

**Tile Dimensions:** 50 cm x 50 cm

**Pile Height:** 4.5 mm +/-10%

**Total Thickness:** 7.0 mm +/-10%

**Pile Weight:** 550 g/m<sup>2</sup>

**Tufts per m<sup>2</sup>:** 176.850 g/m<sup>2</sup>

**Castor Chair Rating:** BS EN 985 Pass

**Body Voltage Test:** BS ISO 63562:2000 <2kV

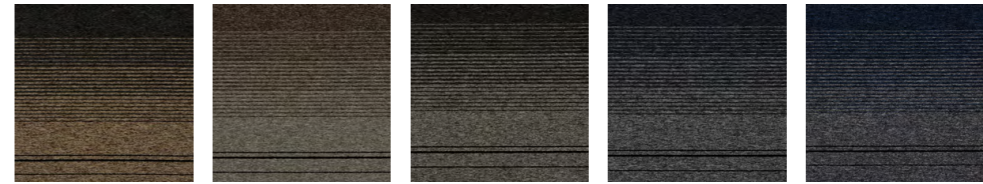
**Colour Fastness To Light:** Minimum grade 6

**Flammability:** Euroclass Bfl-s1

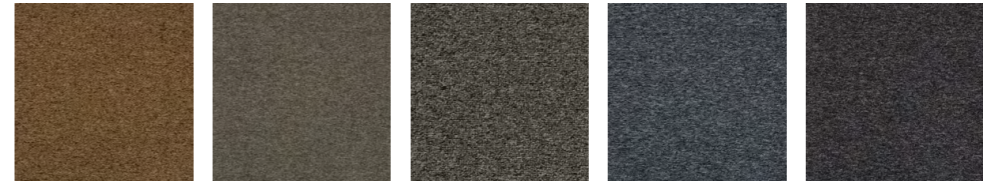


## balance stripe

**balance stripe** is a loop pile range in the Burmatex portfolio. Its timeless appearance combined with a classic and contemporary colour palette is perfect for offices, corporate buildings or commercial spaces. This BREEAM A+ rated collection can be easily combined with other Burmatex products from tufted, structured bonded and fibre bonded collections to create a unique scheme.



18804 earth    18805 rock    18801 storm    18803 cove    18802 marine



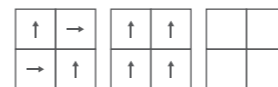
51436 timber    51441 cotton    51402 flint    51434 cumulus    51412 deep sea



51440 soot    51435 fudge    51410 charcoal    51433 moonlight    51403 midnight

**Specification**

- Product Description:** Low Level Loop
- Pile Yarn Description:** 100% Solution Dyed Nylon (Polyamide-PA)
- Tile Dimensions:** 50 cm x 50 cm
- Pile Height:** 4.5 mm +/-10%
- Total Thickness:** 7.0 mm +/-10%
- Pile Weight:** 550 g/m<sup>2</sup>
- Tufts per m<sup>2</sup>:** 176,850 g/m<sup>2</sup>
- Castor Chair Rating:** BS EN 985 Pass
- Body Voltage Test:** BS ISO 6356:2000 <2kV
- Colour Fastness To Light:** Minimum grade 6
- Flammability:** Euroclass Bfl-s1



# balance atomic

**balance atomic** is an exciting, contemporary loop pile, with a colour palette ranging from warm beiges, through greys, to cool blues. This BREEAM A+ rated collection comes in 3 co-ordinating designs; a plain, a pinstripe and a versatile, random effect, all of which work alone or complement each other perfectly to create a stylish, individual look for any interior.

balance atomic storm, marine, cove, earth and rock are multi tile designs. Each box of tiles contains a selection of these designs which can be laid monolithic, quarter turn or random to achieve the desired effect.



18501 grey

#### Specification

**Product Description:** Low Level Loop

**Pile Yarn Description:** 100% Solution Dyed Nylon (Polyamide-PA)

**Tile Dimensions:** 50 cm x 50 cm

**Pile Height:** 4.5 mm +/-10%

**Total Thickness:** 7.0 mm +/-10%

**Pile Weight:** 550 g/m<sup>2</sup>

**Tufts per m<sup>2</sup>:** 176,850 g/m<sup>2</sup>

**Castor Chair Rating:** BS EN 985 Pass

**Body Voltage Test:** BS ISO 6356:2000 <2kV

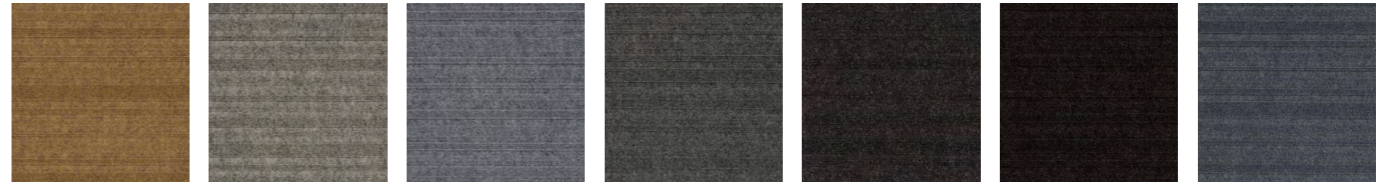
**Colour Fastness To Light:** Minimum grade 6

**Flammability:** Euroclass Bfl-s1



## balance greyscale

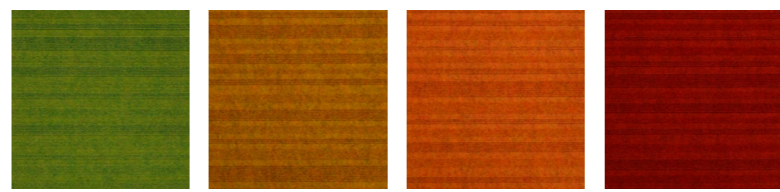
**balance greyscale** is a new dark grey 'field' tile which co-ordinates beautifully with most products from burmatex, including the 8 vibrant colourways from Strands and the new stylish Balance Atomic range. This BREEAM A+ rated loop pile tile provides a subtle, plain contrast against striped or textured areas, for meeting or breakout areas in offices or other corporate buildings.



1834 soap stone    1891 pewter cloud    1805 diamond dust    1803 concrete jungle    1802 zinc asphalt    1801 carbon steel    1809 ink stone



1814 blue monday    1813 lavender oil    1890 purple emperor    1886 pink diamond    1812 indigo snake    1882 turquoise mountain    1883 emerald coast

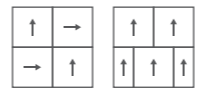


1830 lime street    1887 gold quest    1839 mandarin duck    1845 scarlet runner

structure bonded®

**Specification**

- Product Description:** Structure Bonded®
- Pile Yarn Description:** 85% Polypropylene 15% Nylon
- Tile Dimensions:** 50 cm x 50 cm
- Total Thickness:** 7.8 mm +/-10%
- Pile Weight:** 950 g/m<sup>2</sup>
- Castor Chair Rating:** BS EN 985 Pass
- Body Voltage Test:** BS ISO 6356:2000 <2kV
- Colour Fastness To Light:** Minimum grade 6
- Flammability:** Euroclass Bfl-s1

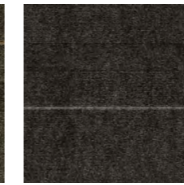


# lateral®

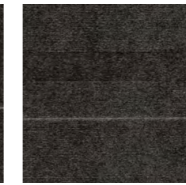
**lateral®** is the definitive product offering for all commercial interiors, schools, public buildings, residential schemes and design and build projects. **lateral's** 'ground-breaking' design stems from our innovative, structure bonded manufacturing technology using an unusual mix of textures from cut through to loop pile. It is available in a range of 18 colours.



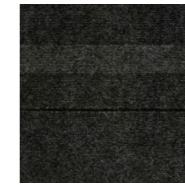
12812 quartz layer



12826 pewter cast



12830 diamond bolt



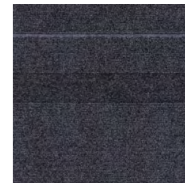
12806 steel cable



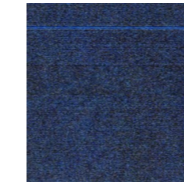
12828 suede ribbon



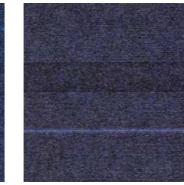
12829 black tar



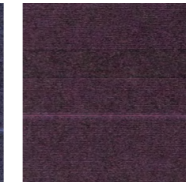
12823 ink bar



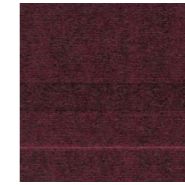
12827 blue bay



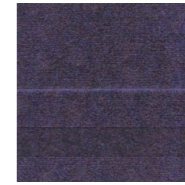
12824 lavender star



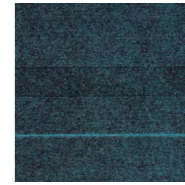
12820 purple patch



12816 pink gin



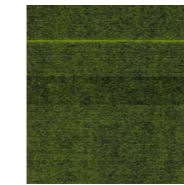
12831 indigo run



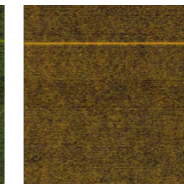
12822 turquoise gem



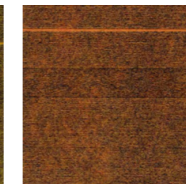
12825 emerald green



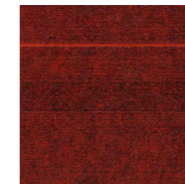
12802 lime light



12818 gold finger



12801 sunset strip



12804 scarlet ribbon

#### Specification

**Product Description:** Structure Bonded®

**Pile Yarn Description:** 85% Polypropylene 15% Nylon

**Tile Dimensions:** 50 cm x 50 cm

**Total Thickness:** 8.0 mm +/-10%

**Pile Weight:** 1000 g/m²

**Castor Chair Rating:** BS EN 985 Pass

**Body Voltage Test:** BS ISO 6356:2000 <2kV

**Colour Fastness To Light:** Minimum grade 6

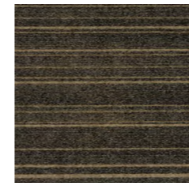
**Flammability:** Euroclass Bfl-s1



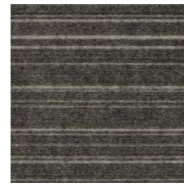
# zip

**zip** is the next generation in structure-bonded® design, evolving from the technology that created lateral®.

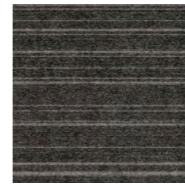
**zip** uses subtle texture and contrasting colour for a striking effect. Combine **zip** with code and lateral® to produce a unique floor design.



12912 cool stone



12926 pewter track



12930 diamond coal



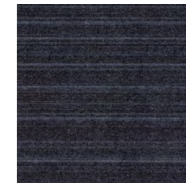
12906 metal shock



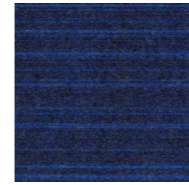
12928 night suede



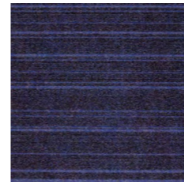
12929 pitch black



12923 ink film



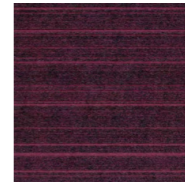
12927 blue reef



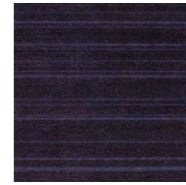
12924 lavender seed



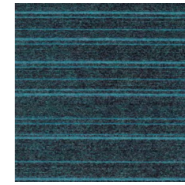
12920 deep purple



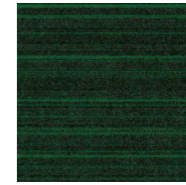
12916 pink panther



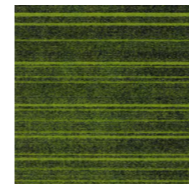
12931 indigo stack



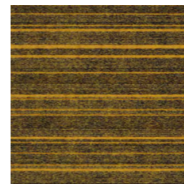
12922 turquoise opal



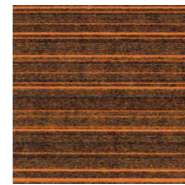
12925 emerald city



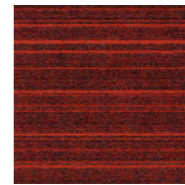
12902 lime zest



12918 rolled gold



12901 sun burst



12904 scarlet fever

#### Specification

**Product Description:** Structure Bonded®

**Pile Yarn Description:** 85% Polypropylene 15% Nylon

**Tile Dimensions:** 50 cm x 50 cm

**Total Thickness:** 8.0 mm +/-10%

**Pile Weight:** 1000 g/m²

**Castor Chair Rating:** BS EN 985 Pass

**Body Voltage Test:** BS ISO 6356:2000 <2kV

**Colour Fastness To Light:** Minimum grade 6

**Flammability:** Euroclass Bfl-s1

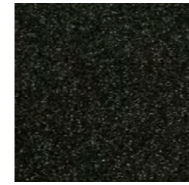


## code

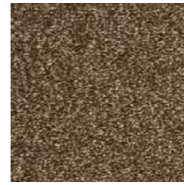
**code** is the next generation in structure-bonded® design, evolving from the technology that created lateral®.

**code** uses subtle contrasting stripes of colour and texture for a stylish defined look. Combine **code** with zip and lateral® to produce a unique floor design.

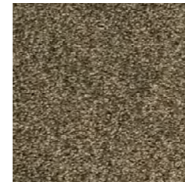




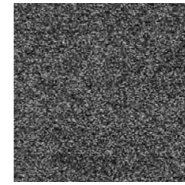
52026 shadow



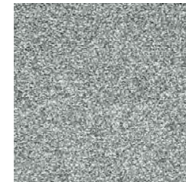
52039 mocha



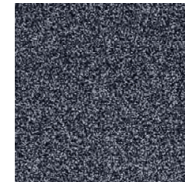
52040 taupe



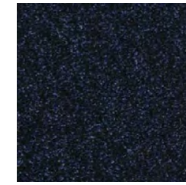
52011 onyx



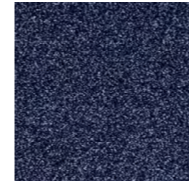
52009 pyrite



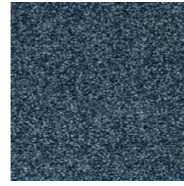
52025 galena



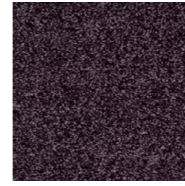
52028 night sky



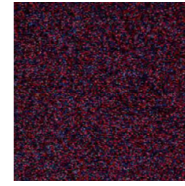
52018 tanzanite



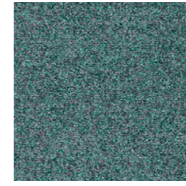
52001 blue john



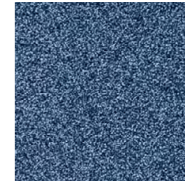
52020 black opal



52014 flash fire



52016 turquoise



52008 tourmaline

#### Specification

**Product Description:** Cut Pile

**Pile Yarn Description:** 100% Solution Dyed Nylon

**Tile Dimensions:** 50 cm x 50 cm

**Total Thickness:** 8.0 mm +/-10%

**Pile Weight:** 850 g/m<sup>2</sup>

**Tufts per m<sup>2</sup>:** 157,480 g/m<sup>2</sup>

**Castor Chair Rating:** BS EN 985 Pass

**Body Voltage Test:** BS ISO 6356:2000 <2kV

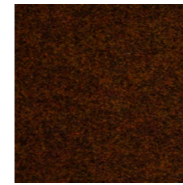
**Colour Fastness To Light:** Minimum grade 6

**Flammability:** Euroclass Bfl-s1

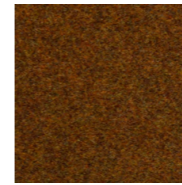


## origin

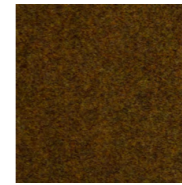
**origin** is a luxurious, contemporary cut pile carpet tile, comprising 13 shades which create a wonderful broadloom appearance when used in large scale or smaller breakout areas. Made from 100% Premium Branded Solution Dyed Nylon, it is suitable for boardrooms, reception areas and most commercial spaces.



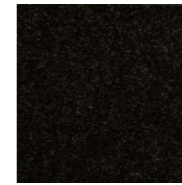
2126 grampian gold



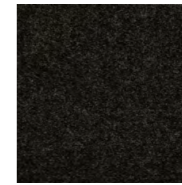
2128 angus tan



2129 falkirk fawn



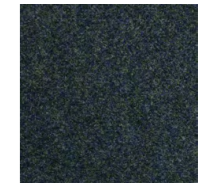
2110 berkshire black



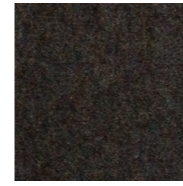
2109 glamorgan grey



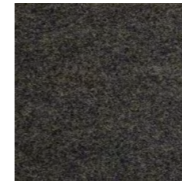
2111 wiltshire charcoal



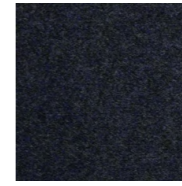
2102 Devon Blue



2104 hampshire slate



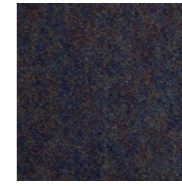
2107 surrey blue



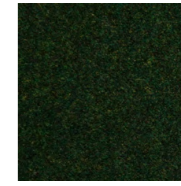
2101 cornwall blue



2105 sussex sea



2106 kent mauve



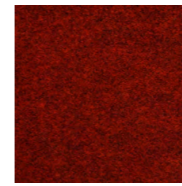
2119 lancashire green



2118 Yorkshire Fern



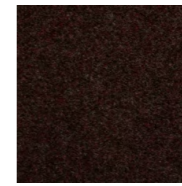
2117 cheshire jade



2115 norfolk sun



2114 shropshire maroon



2112 suffolk heather

#### Specification

**Product Description:** Fibre Bonded

**Pile Yarn Description:** 85% Polypropylene 15% Nylon

**Roll Length:** 30m

**Roll Width:** 2m

**Total Thickness:** 4.8 mm +/-10%

**Total Weight:** 915 g/m<sup>2</sup> +/-10%

**Castor Chair Rating:** BS EN 985 Pass

**Body Voltage Test:** BS ISO 6356:2000 <2kV

**Colour Fastness To Light:** Minimum grade 6

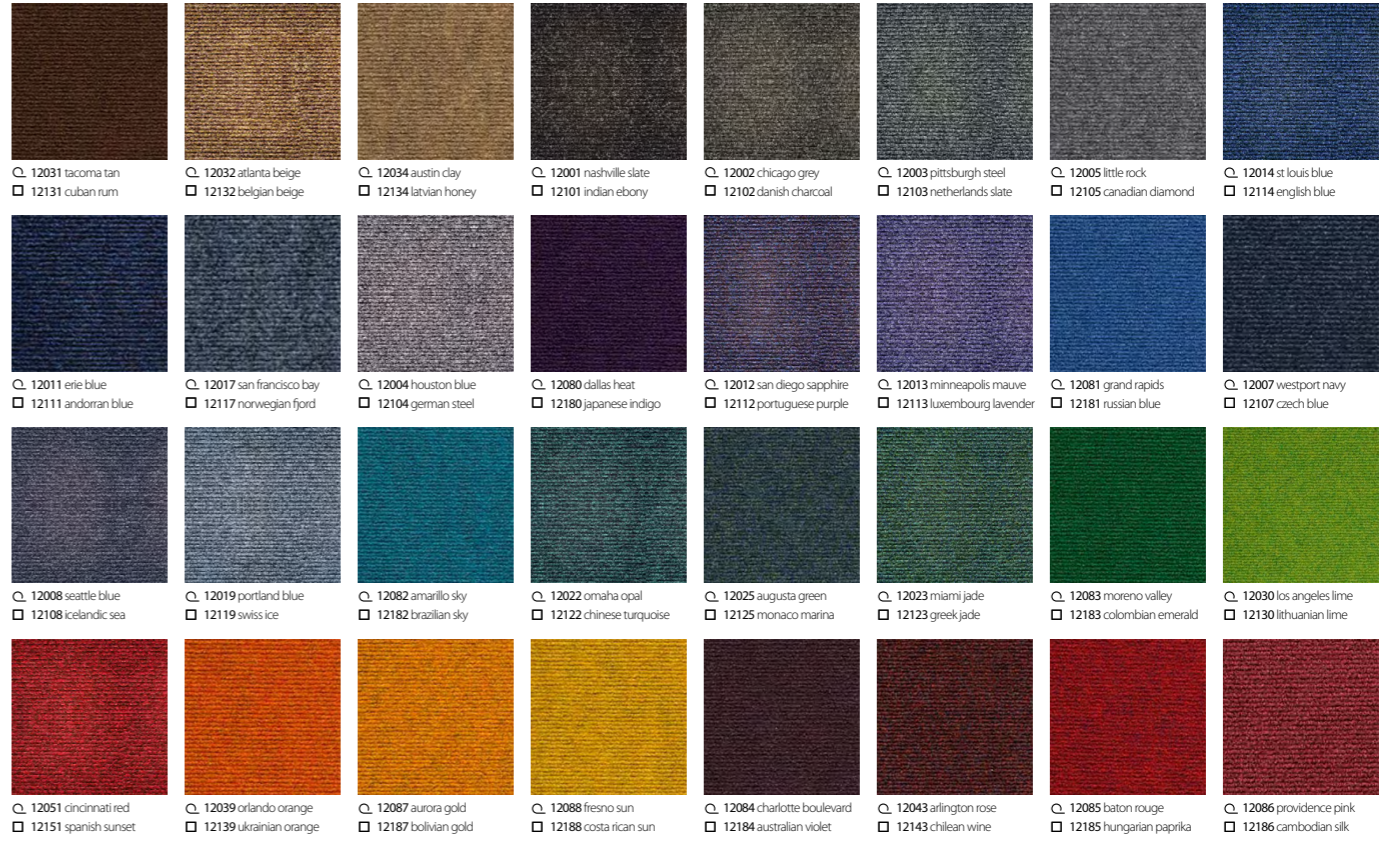
**Flammability:** Euroclass Cf1-s1

## 3230 classic

**3230 classic** is extremely durable fibre bonded carpet, perfectly suited for public buildings, such as schools and gyms and other commercial interiors. Made from a high performance mix of solution dyed fibres, it is available in a choice of 18 practical colourways.



Huddle area



- Q 12031 tacoma tan    Q 12032 atlanta beige    Q 12034 austin clay    Q 12001 nashville slate    Q 12002 chicago grey    Q 12003 pittsburgh steel    Q 12005 little rock    Q 12014 st louis blue
- 12131 cuban rum    □ 12132 belgian beige    □ 12134 latvian honey    □ 12101 indian ebony    □ 12102 danish charcoal    □ 12103 netherlands slate    □ 12105 canadian diamond    □ 12114 english blue
- Q 12011 erie blue    Q 12017 san francisco bay    Q 12004 houston blue    Q 12080 dallas heat    Q 12012 san diego sapphire    Q 12013 minneapolis mauve    Q 12081 grand rapids    Q 12007 westport navy
- 12111 andorran blue    □ 12117 norwegian fjord    □ 12104 german steel    □ 12180 japanese indigo    □ 12112 portuguese purple    □ 12113 luxembourg lavender    □ 12181 russian blue    □ 12107 czech blue
- Q 12008 seattle blue    Q 12019 portland blue    Q 12082 amarillo sky    Q 12022 omaha opal    Q 12025 augusta green    Q 12023 miami jade    Q 12083 moreno valley    Q 12030 los angeles lime
- 12108 icelandic sea    □ 12119 swiss ice    □ 12182 brazilian sky    □ 12122 chinese turquoise    □ 12125 monaco marina    □ 12123 greek jade    □ 12183 colombian emerald    □ 12130 lithuanian lime
- Q 12051 cincinnati red    Q 12039 orlando orange    Q 12087 aurora gold    Q 12088 fresno sun    Q 12084 charlotte boulevard    Q 12043 arlington rose    Q 12085 baton rouge    Q 12086 providence pink
- 12151 spanish sunset    □ 12139 ukrainian orange    □ 12187 bolivian gold    □ 12188 costa rican sun    □ 12184 australian violet    □ 12143 chilean wine    □ 12185 hungarian paprika    □ 12186 cambodian silk

- Q roll 4200 sidewalk
- tile cordiale

Specification Q

**Product Description:** Fibre Bonded  
**Pile Yarn Description:** 85% Polypropylene 15% Nylon  
**Roll Length:** 30m  
**Roll Width:** 2m  
**Total Thickness:** 6.0 mm +/-10%  
**Total Weight:** 950 g/m<sup>2</sup> +/-10%  
**Castor Chair Rating:** BS EN 985 Pass  
**Body Voltage Test:** BS ISO 6356:2000 <2kV  
**Colour Fastness To Light:** Minimum grade 6  
**Flammability:** Euroclass EF-s1\*

\*200m<sup>2</sup> minimum order quantity for Cf1-s1 rating

Specification □

**Product Description:** Fibre Bonded  
**Pile Yarn Description:** 85% Polypropylene 15% Nylon  
**Tile Dimensions:** 50 cm x 50 cm  
**Total Thickness:** 7.8 mm +/-10%  
**Pile Weight:** 950 g/m<sup>2</sup>  
**Castor Chair Rating:** BS EN 985 Pass  
**Body Voltage Test:** BS ISO 6356:2000 <2kV  
**Colour Fastness To Light:** Minimum grade 6  
**Flammability:** Euroclass Bfl-s1

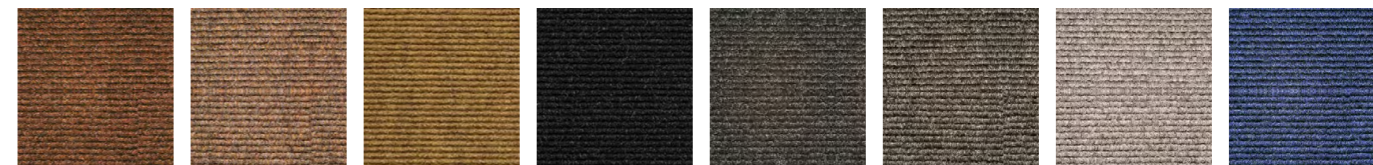


# 4200 sidewalk

**4200 sidewalk** is an extremely durable fine ribbed fibre bonded carpet sheet. It is ideally suited for schools, public buildings and commercial offices. Made from a high performance mix of solution dyed fibres, it is available in a range of 32 vibrant colours.

# cordiale

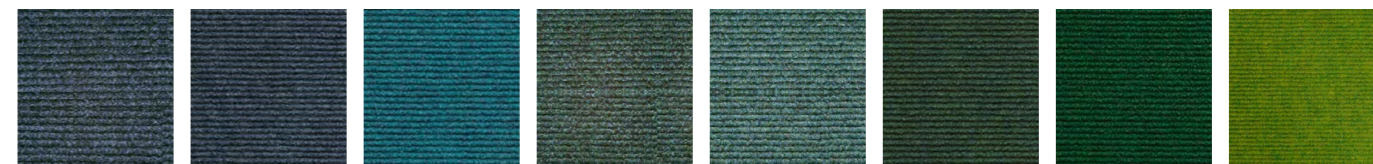
**cordiale** is an extremely durable fine ribbed fibre bonded carpet tile. It is ideally suited for schools, public buildings and commercial offices. Made from a high performance mix of solution dyed fibres, it is available in a range of 32 vibrant colours.



11531 buffalo brown  
 11831 rishworth brown  
 11532 harlem beige  
 11832 buckingham beige  
 11534 rockland stone  
 11834 hereford stone  
 11501 edison slate  
 11801 sedburgh slate  
 11502 oregon grey  
 11802 gresham grey  
 11503 lexington grey  
 11803 gordonstoun grey  
 11505 waldorf grey  
 11805 sherborne grey  
 11514 virginia blue  
 11814 oriel blue



11511 newark blue  
 11811 repton blue  
 11517 bowery blue  
 11817 winchester blue  
 11504 staten steel  
 11804 durham steel  
 11580 dutchess purple  
 11880 exeter indigo  
 11512 bergen sapphire  
 11812 stamford sapphire  
 11513 new york mauve  
 11813 malvern mauve  
 11581 richmond blue  
 11881 strathallan blue  
 11507 montana blue  
 11807 kings navy



11508 hudson blue  
 11808 marlborough blue  
 11519 new haven blue  
 11819 bradfield blue  
 11582 long island sky  
 11882 dover teal  
 11522 washington jade  
 11822 harrow green  
 11525 madison marine  
 11825 rossall jade  
 11523 newburgh jade  
 11823 monmouth moss  
 11583 litchfield green  
 11883 ackworth green  
 11530 colorado lime  
 11830 loretto lime



11551 saratoga red  
 11851 rugby red  
 11539 florida flame  
 11839 oundle orange  
 11587 westchester gold  
 11887 epsom gold  
 11588 syracuse sun  
 11888 kingsmead gold  
 11584 queens purple  
 11884 wellington purple  
 11543 texas rose  
 11843 keble rose  
 11585 cortland rouge  
 11885 rougemont red  
 11586 trenton pink  
 11886 dulwich pink

roll 4200 sidewalk  
 tile cordiale

Specification

**Product Description:** Fibre Bonded  
**Pile Yarn Description:** 85% Polypropylene 15% Nylon  
**Roll Length:** 30m  
**Roll Width:** 2m  
**Total Thickness:** 6.5 mm +/-10%  
**Total Weight:** 975 g/m<sup>2</sup> +/-10%  
**Castor Chair Rating:** BS EN 985 Pass  
**Body Voltage Test:** BS ISO 6356:2000 <2kV  
**Colour Fastness To Light:** Minimum grade 6  
**Flammability:** Euroclass EF-s1\*

\*200m2 minimum order quantity for Cf1-s1 rating

Specification

**Product Description:** Fibre Bonded  
**Pile Yarn Description:** 85% Polypropylene 15% Nylon  
**Tile Dimensions:** 50 cm x 50 cm  
**Total Thickness:** 7.8 mm +/-10%  
**Pile Weight:** 975 g/m<sup>2</sup>  
**Castor Chair Rating:** BS EN 985 Pass  
**Body Voltage Test:** BS ISO 6356:2000 <2kV  
**Colour Fastness To Light:** Minimum grade 6  
**Flammability:** Euroclass Bfl-s1

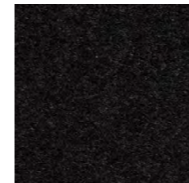


# 4400 broadway

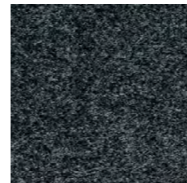
**4400 broadway** is an extremely durable broad ribbed fibre bonded carpet sheet and is particularly suited for public buildings, such as schools, and other commercial interiors. Made from a high performance mix of solution dyed fibres, it is available in a wide range of 32 exciting colourways.

# academy

**academy** is an extremely durable broad ribbed fibre bonded carpet tile and is particularly suited for public buildings, such as schools, and other commercial interiors. Made from a high performance mix of solution dyed fibres, it is available in a wide range of 32 exciting colourways.



2670 black slate



2640 charcoal grey



2650 steel grey



2620 electric blue



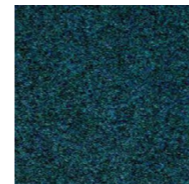
2628 ocean blue



2656 summer sky



2642 teal green



2631 sea blue



2634 aqua



2666 deep indigo



2690 purple haze



2630 flame red

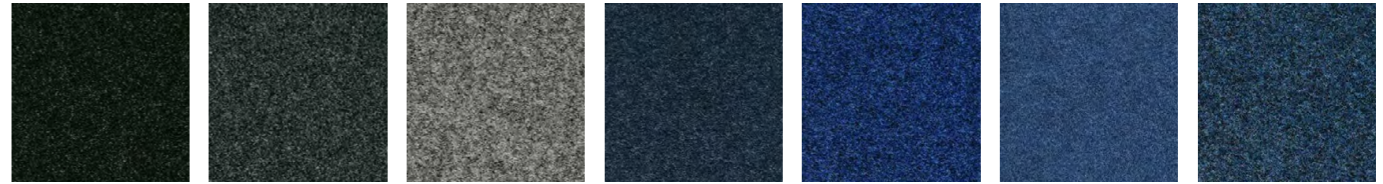
**Specification**

- Product Description:** Fibre Bonded
- Pile Yarn Description:** 100% Polypropylene
- Tile Dimensions:** 50 cm x 50 cm
- Total Thickness:** 7.8 mm +/-10%
- Pile Weight:** 1000 g/m<sup>2</sup>
- Body Voltage Test:** BS ISO 6356:2000 <2kV
- Colour Fastness To Light:** Minimum grade 6
- Flammability:** Euroclass Bfl-s1



# rialto

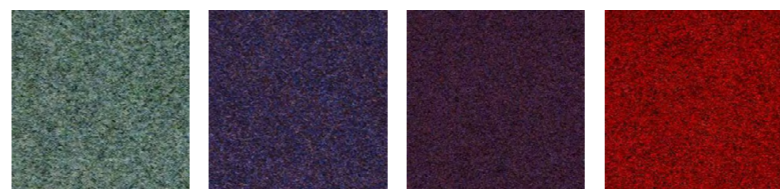
**rialto** is an extremely durable heavy contract velour pile carpet tile. It is constructed from 100% polypropylene yarn and is ideally suited for public buildings, such as schools, and other commercial interiors. It is available in 12 colourways.



6070 yakama slate    6040 armenian grey    6050 norman steel    6023 iceni blue    6060 barona blue    6081 bavarian blue    6028 saxon blue



6056 spartan mauve    6061 skydancer    6036 phoenician green    6083 norse green    6045 trojan green    6055 dorian azure    6082 mayan sky



6022 assyrian jade    6066 navajo mauve    6090 persian purple    6062 red lake

**Specification**

**Product Description:** Fibre Bonded  
**Pile Yarn Description:** 85% Polypropylene 15% Nylon  
**Roll Length:** 30m  
**Roll Width:** 2m  
**Total Thickness:** 6.5 mm +/-10%  
**Total Weight:** 1150 g/m<sup>2</sup> +/-10%  
**Castor Chair Rating:** BS EN 985 Pass  
**Body Voltage Test:** BS ISO 6356:2000 <2kV  
**Colour Fastness To Light:** Minimum grade 6  
**Flammability:** Euroclass EF-s1

**Specification**

**Product Description:** Fibre Bonded  
**Pile Yarn Description:** 85% Polypropylene 15% Nylon  
**Tile Dimensions:** 50 cm x 50 cm  
**Total Thickness:** 10 mm +/-10%  
**Pile Weight:** 1200 g/m<sup>2</sup>  
**Castor Chair Rating:** BS EN 985 Pass  
**Body Voltage Test:** BS ISO 6356:2000 <2kV  
**Colour Fastness To Light:** Minimum grade 6  
**Flammability:** Euroclass BF-s1

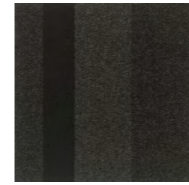


# 5500 luxury

**5500** is an extremely durable fibre bonded carpet sheet, ideally suited for public buildings, such as schools, and other commercial interiors. Made from a high performance mix of solution dyed fibres, it is available in a choice of 18 attractive colourways.

# velour excel

**velour excel** is an extremely durable fibre bonded carpet tile, ideally suited for public buildings, such as schools, and other commercial interiors. Made from a high performance mix of solution dyed fibres, it is available in a choice of 18 attractive colourways.



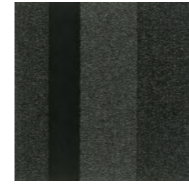
18703 graphite block



18701 graphite



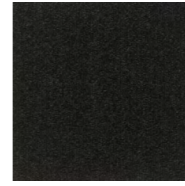
18702 graphite stripe



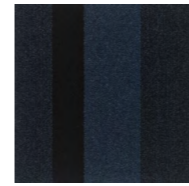
18706 sterling block



18704 sterling



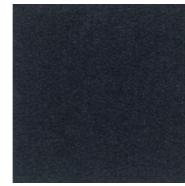
18705 sterling stripe



18709 cobalt block



18707 cobalt



18708 cobalt stripe

#### Specification

**Product Description:** Performance Barrier System

**Pile Yarn Description:** 100% Solution Dyed Nylon (Polyamide-PA)

**Tile Dimensions:** 50 cm x 50 cm

**Total Thickness:** 10.0 mm +/-10%

**Pile Weight:** 920 g/m<sup>2</sup>

**Tufts per m<sup>2</sup>:** 110,236 g/m<sup>2</sup>

**Castor Chair Rating:** BS EN 985 Pass

**Body Voltage Test:** BS ISO 6356:2000 <2KV

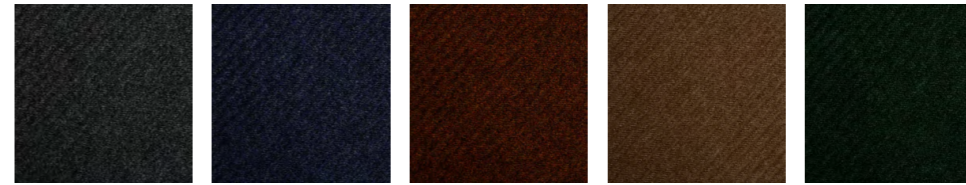
**Colour Fastness To Light:** Minimum grade 6

**Flammability:** Euroclass Bfl-s1



## armour

**armour** offers the ultimate in entrance performance with its combination of absorber and scraper yarns, which protect internal floor finishes by trapping up to 90% of dirt and moisture, tracked in by foot and wheel traffic. The combination of plain, stripe and block stripes in the key blending colours of dark grey, warm grey and blue, will coordinate beautifully with any flooring design scheme. Armour is ideal for primary and secondary entrance areas, as well as lobby, lift areas and staircases.



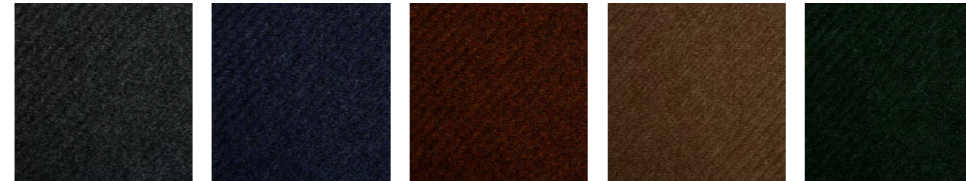
1440 grey      1428 blue      1439 brown      1446 fawn      1436 green

**Specification**

**Product Description:** Fibre Bonded  
**Pile Yarn Description:** 100% Polypropylene  
**Roll Length:** 30m  
**Roll Width:** 2m  
**Total Thickness:** 10.0 mm +/-10%  
**Total Weight:** 1490 g/m<sup>2</sup> +/-10%  
**Colour Fastness To Light:** Minimum grade 6  
**Flammability:** Euroclass EF-s1

# 7700 grimebuster

7700 grimebuster is a heavy contract ribbed fibre bonded carpet. It is ideal for withstanding heavy footfall environments and creating an effective dirt barrier for busy entrances, which lead directly from outside environments.



1640 newmarket grey      1628 haydock blue      1639 goodwood brown      1646 wincanton fawn      1636 curragh green

**Specification**

**Product Description:** Fibre Bonded  
**Pile Yarn Description:** 100% Polypropylene  
**Tile Dimensions:** 50 cm x 50 cm  
**Total Thickness:** 12.0 mm +/-10%  
**Pile Weight:** 1170 g/m<sup>2</sup>  
**Total Weight:** 4300 g/m<sup>2</sup>  
**Colour Fastness To Light:** Minimum grade 6  
**Flammability:** Euroclass BF-s1

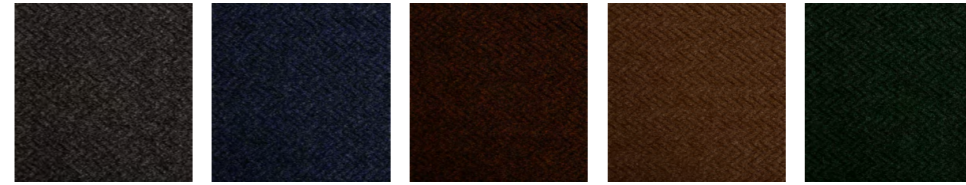


# grimebuster 50

**grimebuster 50** is a heavy contract fibre bonded carpet tile with a deep diagonal rib surface.

It is ideal for withstanding heavy footfall environments and creating an effective dirt barrier for busy entrances, which lead directly from outside environments.





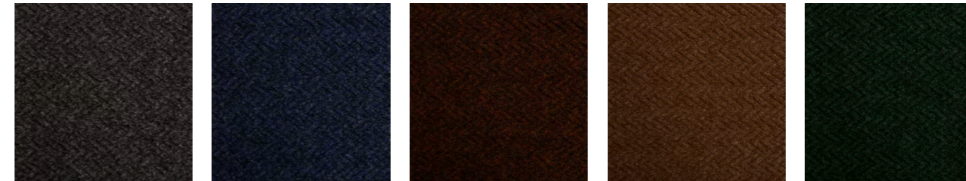
7840 charcoal    7828 blue    7839 brown    7846 fawn    7836 green

**Specification**

**Product Description:** Fibre Bonded  
**Pile Yarn Description:** 100% Polypropylene  
**Roll Length:** 30m  
**Roll Width:** 2m  
**Total Thickness:** 10.0 mm +/-10%  
**Total Weight:** 1490 g/m<sup>2</sup> +/-10%  
**Colour Fastness To Light:** Minimum grade 6  
**Flammability:** Euroclass EF-s1

# 7800 chevrolay

**7700 chevrolay** is a heavy contract chevron ribbed fibre bonded carpet. It is ideal for withstanding heavy footfall environments and creating an effective dirt barrier for busy entrances, which lead directly from outside environments.



6240 alpha grey    6228 beta blue    6239 theta brown    6246 kappa fawn    6236 gamma green

**Specification**

**Product Description:** Fibre Bonded  
**Pile Yarn Description:** 100% Polypropylene  
**Tile Dimensions:** 50 cm x 50 cm  
**Total Thickness:** 12.0 mm +/-10%  
**Pile Weight:** 1490 g/m<sup>2</sup>  
**Total Weight:** 4300 g/m<sup>2</sup>  
**Colour Fastness To Light:** Minimum grade 6  
**Flammability:** Euroclass BF-s1



# chevrolay 50

**chevrolay 50** is a heavy contract chevron ribbed fibre bonded tile with deep chevron design.

It is ideal for withstanding heavy footfall environments and creating an effective dirt barrier for busy entrances, which lead directly from outside environments.

## characteristics of the products

Name	Dimensions Rolls (R) / Tiles (T)	Product Type	Pile Description	Carpet Pile Weight g/m <sup>2</sup>	Tile Total Weight g/m <sup>2</sup>	Carpet Total Thickness mm	Tile Total Thickness mm	Number of tufts x/m <sup>2</sup>	Backing	Flammability EN13501	Impact Noise	Number of SKUs	Suitable for Underfloor Heating	Body Voltage kV	Wear Classification	Colour Fastness to Light BS EN ISO 105	Slip Resistant	Castor Chair EN985
<b>Alaska</b>	T 50cm x 50cm	Multilevel Loop	100% Econyl Nylon(PA)	800	4200	5	7.5	226,771	Accummen®	Bfl-S1	22 dB	12	Yes below 27°	<2.0	Class 33	>6	NPD	Pass
<b>Hadron</b>	T 50cm x 50cm	Textured Loop	100% Nylon 6.6 (PA)	800	4240	3.5	6.5	177,165	Accummen®	Bfl-S1	23 dB	17	Yes below 27°	<2.0	Class 33	>6	NPD	Pass
<b>Strands</b>	T 50cm x 50cm	Textured Loop	100% Nylon(PA)	680	4430	4.5	7	180,976	Accummen®	Bfl-S1	23 dB	24	Yes below 27°	<2.0	Class 33	>6	NPD	Pass
<b>Axis</b>	T 50cm x 50cm	Textured Loop	100% Econyl Nylon(PA)	550	4000	3.5	7	177,165	Accummen®	Bfl-S1	20 dB	11	Yes below 27°	<2.0	Class 33	>6	NPD	Pass
<b>Surface</b>	T 50cm x 50cm	Textured Loop	100% Nylon(PA)	550	4200	3.5	6	188,976	Accummen®	Bfl-S1	25 dB	7	Yes below 27°	<2.0	Class 33	>6	NPD	Pass
<b>Tandem</b>	T 50cm x 50cm	Textured Loop	100% Nylon(PA)	620	4100	3.15	5	235,800	Accummen®	Bfl-S1	20 dB	6	Yes below 27°	<2.0	Class 33	>6	NPD	Pass
<b>Up/Down</b>	T 50cm x 50cm	Textured Loop	100% Nylon(PA)	580	4330	4	6.5	176,850	Accummen®	Bfl-S1	24 dB	24	Yes below 27°	<2.0	Class 33	>6	NPD	Pass
<b>Go To</b>	T 50cm x 50cm	Level Loop	100% Nylon(PA)	470	3780	3.0	5.5	196,850	Accummen®	Bfl-S1	20 dB	15	Yes below 27°	<2.0	Class 33	>6	NPD	Pass
<b>Tivoli</b>	T 50cm x 50cm P 25 cm x 100 cm	Level Loop	100% Nylon(PA)	600	4050	4	6.5	196,500	Accummen®	Bfl-S1	23 dB	38	Yes below 27°	<2.0	Class 33	>6	NPD	Pass
<b>Infinity</b>	T 50cm x 50cm	Level Loop	100% Nylon(PA)	550	4000	4.8	7.3	196,500	Accummen®	Bfl-S1	28 dB	18	Yes below 27°	<2.0	Class 33	>6	NPD	Pass
<b>Grade</b>	T 50cm x 50cm P 25 cm x 100 cm	Level Loop	100% Nylon(PA)	620	4100	3.5	6	235.800	Accummen®	Bfl-S1	21dB	9	Yes below 27°	<2.0	Class 33	>6	NPD	Pass
<b>Balance</b>	T 50cm x 50cm	Level Loop	100% Nylon(PA)	550	4300	4.5	7	176,850	Accummen®	Bfl-S1	24 dB	18	Yes below 27°	<2.0	Class 33	>6	NPD	Pass
<b>Balance Echo</b>	T 50cm x 50cm P 25 cm x 100 cm	Level Loop	100% Nylon(PA)	550	4300	4.5	7	176,850	Accummen®	Bfl-S1	24 dB	18	Yes below 27°	<2.0	Class 33	>6	NPD	Pass
<b>Balance Stripe</b>	T 50cm x 50cm	Level Loop	100% Nylon(PA)	550	4300	4.5	7	176,850	Accummen®	Bfl-S1	24 dB	6	Yes below 27°	<2.0	Class 33	>6	NPD	Pass
<b>Balance Atomic</b>	T 50cm x 50cm	Level Loop	100% Nylon(PA)	550	4300	4.5	7	176,850	Accummen®	Bfl-S1	24 dB	20	Yes below 27°	<2.0	Class 33	>6	NPD	Pass
<b>Balance Greyscale</b>	T 50cm x 50cm	Level Loop	100% Nylon(PA)	550	4300	4.5	7	176,850	Accummen®	Bfl-S1	24 dB	1	Yes below 27°	<2.0	Class 33	>6	NPD	Pass
<b>Lateral</b>	T 50cm x 50cm	Structure Bonded	85%PP 15%PA	950	4200	5.5*	7.8	-	Accummen®	Bfl-S1	18 dB	18	Yes below 27°	<2.0	HC	>6	NPD	Pass
<b>Zip</b>	T 50cm x 50cm	Structure Bonded	85%PP 15%PA	1000	4250	5.5*	8	-	Accummen®	Bfl-S1	17 dB	11	Yes below 27°	<2.0	HC	>6	NPD	Pass
<b>Code</b>	T 50cm x 50cm	Structure Bonded	85%PP 15%PA	1000	4250	5.5*	8	-	Accummen®	Bfl-S1	17 dB	11	Yes below 27°	<2.0	HC	>6	NPD	Pass
<b>Origin</b>	T 50cm x 50cm	Cut Pile	100% Nylon(PA)	850	4300	5	8	157,480	Accummen®	Bfl-S1	23 dB	13	Yes below 27°	<2.0	Class 33	>6	NPD	Pass
<b>3230 Classic</b>	R 2m x 30m	Fibre Bonded Sheet	85%PP 15%PA	915	-	4.8	-	-	Uniform	Cfl-S1	17 dB	18	Yes below 27°	<2.0	HC	>6	NPD	Pass
<b>4200 Sidewalk</b>	R 2m x 30m	Fibre Bonded Sheet	85%PP 15%PA	950	-	6	-	-	Uniform	Efl-S1	18 dB	32	Yes below 27°	<2.0	HC	>6	NPD	Pass
<b>4200 SidewalkFR</b>	R 2m x 30m	Fibre Bonded Sheet	85%PP 15%PA	950	-	6	-	-	Uniform	Cfl-S1	18 dB	32	Yes below 27°	<2.0	HC	>6	NPD	Pass
<b>Cordiale</b>	T 50cm x 50cm	Fibre Bonded Tile	85%PP 15%PA	950	4200	6	7.8	-	Accummen®	Bfl-S1	18 dB	32	Yes below 27°	<2.0	HC	>6	NPD	Pass
<b>4400 Broadway</b>	R 2m x 30m	Fibre Bonded Sheet	85%PP 15%PA	975	-	6.5	-	-	Uniform	Efl-S1	19 dB	32	Yes below 27°	<2.0	HC	>6	NPD	Pass
<b>4400 BroadwayFR</b>	R 2m x 30m	Fibre Bonded Sheet	85%PP 15%PA	975	-	6.5	-	-	Uniform	Cfl-S1	19 dB	32	Yes below 27°	<2.0	HC	>6	NPD	Pass
<b>Academy</b>	T 50cm x 50cm	Fibre Bonded Tile	85%PP 15%PA	975	4200	6.5	7.8	-	Accummen®	Bfl-S1	21 dB	32	Yes below 27°	<2.0	HC	>6	NPD	Pass
<b>Rialto</b>	T 50cm x 50cm	Fibre Bonded Tile	100%PP	1000	4450	6	7.8	-	Accummen®	Bfl-S1	-	12	Yes below 27°	<2.0	HC	>6	NPD	Pass
<b>5500 Sheet</b>	R 2m x 30m	Fibre Bonded Sheet	85%PP 15%PA	1150	-	6.5	-	-	Uniform	Efl-S1	21 dB	18	Yes below 27°	<2.0	HC	>6	NPD	Pass
<b>Velour Excel</b>	T 50cm x 50cm	Fibre Bonded Tile	85%PP 15%PA	1200	4900	8	10	-	Accummen®	Bfl-S1	21 dB	18	Yes below 27°	<2.0	HC	>6	NPD	Pass

## entrance matting

Name	Dimensions Rolls (R) / Tiles (T)	Product Type	Pile Description	Carpet Pile Weight g/m <sup>2</sup>	Total Weight g/m <sup>2</sup>	Thickness mm	Backing	Flammability EN13501	Number of SKUs	Wear Classification	Colour Fastness to Light BS EN ISO 105	Slip Resistant
<b>Armour</b>	T 50cm x 50cm	Cut Pile	100%PA	920	4500	10	Accummen®	Bfl-S1	9	Class 33	>6	DS
<b>7700 Grimebuster</b>	R 2m x 30m	Fibre Bonded Sheet	100% PP	-	1490	10	Uniform	Efl-S1	5	HC	>6	NPD
<b>Grimebuster 50</b>	T 50cm x 50cm	Fibre Bonded Tile	100% PP	1490	4300	12	Accummen®	Bfl-S1	5	HC	>6	NPD
<b>7800 Chevrolay</b>	R 2m x 30m	Fibre Bonded Sheet	100% PP	-	1490	10	Uniform	Efl-S1	5	HC	>6	NPD
<b>Chevrolay 50</b>	T 50cm x 50cm	Fibre Bonded Tile	100% PP	1490	4300	12	Accummen®	Bfl-S1	5	HC	>6	NPD

# Appendix

7	alaska	43	lateral
9	hadron	45	zip
11	strands	47	code
13	axis	49	origin
15	surface	51	3230 classic
17	tandem	53	4200 sidewalk
19	up/down	55	cordiale
21	go to	51	4400 broadway
23	tivoli tile	53	academy
27	tivoli plank	57	rialto
29	infinity	59	5500 luxury
31	grade	59	velour excel
33	balance	61	armour
35	balance echo	63	7700 grimebuster
37	balance stripe	63	grimebuster 50
39	balance atomic	65	7800 chevrolay
41	balance greyscale	65	chevrolay 50



# ENVIRONMENT FRIENDLY CARPETS

## Head Office

Victoria Mills, The Green  
Ossett  
West Yorkshire  
WF5 0AN  
United Kingdom

Tel: +44 (0) 1924 262525  
Fax: +44 (0) 1924 280033  
Email: [projects@burmatex.co.uk](mailto:projects@burmatex.co.uk)  
Web: [www.burmatex.co.uk](http://www.burmatex.co.uk)

## International Enquires

[international@burmatex.co.uk](mailto:international@burmatex.co.uk)

## Eastern Europe Office

burmatex sp. z o.o.  
ul. Ostrowska 364  
61-312 Poznań  
Poland

Tel: + 48 61 870 58 70  
Fax: + 48 61 870 58 71  
Mob: + 48 601 58 69 39  
email: [biuro@burmatex.pl](mailto:biuro@burmatex.pl)

# burmatex®

## Plank installation methods

Monolithic



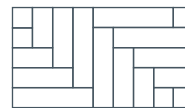
Half Drop



Random Drop



Herringbone



## Tile installation methods

Quarter Turn



Monolithic



Random



Brick



Half Drop



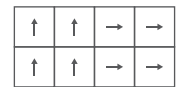
Alternate rows  
rotated 180°



Alternate tiles  
rotated 180°



Large Quarter Turn



Parquet

